



August 2021

The Lesher Difference

Welcome to THE SHIP!



Principal

Dr. Tom Dodd

Assistant Principal

Grade 8

Waren Morrow

Dean Grade 7

Lisa Crossland

Assistant Principal

Grade 6

Janice Martinez

School Website

click [HERE](#)



CLICK IT

Click on the
Ads in this
Newsletter

...to learn more about
these great companies!

Advertising in this newsletter
does not imply endorsement by
the school or district.

Message from the Principal

Dear Viking F-A-M-I-L-Y (Students, Parents/Guardians & Staffulty),

I hope you've found time to rest with family and friends this summer, recuperate from the last 16 months, and watch some of the XXXII Olympiad. The Olympic motto is **Citius, Altius, Fortius – Communiter**, which means **Faster, Higher, Stronger – Together**. This year will be all about getting "Back to Our Base," and coming back faster, performing higher, and getting stronger together. I'm excited to return to in-person learning, albeit with masks, and do what we do best in 2021-22, Lesher's 15th quad, or XV Olympiad! Our BHAG: Big Hairly Audacious Goal (*Good to Great*, 2001, Collins) is still to provide students access to equitable and excellent learning experiences and outcomes through high expectations with high support. It's our moral imperative, it's our professional responsibility, it's what we do, and it is **THE LESHER DIFFERENCE**!

Our declaration of care for those we serve and those we lead continues to be: LOVE YOUR PEOPLE. The people we allow to be in our lives and those who allow us to be in theirs. We make good things happen for other people whenever and wherever we can. We Love Our People, Live The Dream, Anchor Down, are Always Reppin', Row The Boat, and have One Heartbeat because it's all about F-A-M-I-L-Y... Forget About Me I Love You!

Getting back to our base means getting back to our

foci the last few years pre-COVID: EL Achieve (English Language Development) with a Building-wide Reading and Writing Framework, Student/Teacher Emergenetics Program (STEP), Expect Respect bullying prevention and social-emotional support, assessing Student Performance via the IB Middle Years Program (IBMYP) Criteria, Strands, and Approaches to Learning (AtL) Skills, Multi-Tiered Systems of Support (MTSS) and Progress Monitoring, Integrated Services and General Ed. Co-teaching, and Peer Observations in 2021-22 as we prepare our IB self-study and 5-year IB evaluation visit.



So Lesher F-A-M-I-L-Y, let's make it happen IN-PERSON for our 800+ students! It's going to be awesome.

Thank you and shine on,
T. DODD, PhD
Principal

continued...

Message from the Principal, continued...**KEEP CALM & ROW THE BOAT!****Our New Draft Picks:**

1. Natasha Wilson – Math 8/Geometry, Rm. 11
2. Nicole Sietsma – Math 8/Geometry, Rm. 15
3. Joey Heersche – Math 7/8, Rm. 6
4. Conner Grace Lang – Math 7/Algebra, Rm. 25
5. Ryan Van roekel– Math/Science 6, Storm Cutter House w/ Wind, Rm. 300A
6. Matthew Silvas – Social Studies 8, Rm. 17
7. Birdy Harrison – Art 6-8, Rm. 300B (Former Teachers Lounge/Conf. Rm.)
8. Sherise Dawkins – Computer Science, Rm. 19
9. Kelsey Prather – Counselor, 7th grade, Rm. 35 (Counseling Office)
10. Cassie Yoder – Counselor, 8th grade, Rm. 35 (Counseling Office)
11. Cole Zempel – SRO, Rm. 37A (SRO Office)
12. Lauren Roth – Secretary, Rm. 100 (Main Office)
13. Noel Schumann – Paraprofessional w/ Mitchell & Weismann, Rm. 16
14. Emily Mitchell – Floating Sub., Rm. 53 (Media Center)
15. John Rosenthal – Floating Sub., Rm. 53 (Media Center)

Returning Staff Update:

- Becky Knips – 100% Ed. Tech./Bldg. Tech. Coordinator/Teacher On Special Assignment (TOSA)
- Julie Thompson – 85% Spanish 1B 7, Spanish 2, Rm. 4
- Becca Spear – 100% Math/Science 6, Zippleback House w/ Swann, Rm. 2
- Angela Bergmann – 100% Social Studies 7/8, Rm. 9
- Greg Schulz – 100% Social Studies 7, Traveling, Rm. 45 (Strength & Conditioning Office)
- Gary Warchola – 71% German 1A 6, 1A 7, 1B 8, 29% ELA 7, Rm. 3
- Lisa Crossland – 100% Dean, Rm. 36 (ISS Office)
- Jessica Palin – 100% Registrar, Rm. 35 (Counseling Office)

***Please calendar these important dates:***

DATE	EVENT	TIME & LOCATION
Wed., 8/25	Back-to-School Night	6-7:45 (sunset), Leshar Stadium
Thurs., 8/26	School Picture Day	During School Day at Leshar
Mon., 9/6	LABOR DAY HOLIDAY – NO SCHOOL	
Fri., 9/17	Building/Teacher Workday – NO STUDENTS	
Thu., 10/14	End of 1st Quarter	
Fri., 10/15	K-12 Conference Exchange Day – NO SCHOOL	

continued...

SELLER'S MARKET

Call today!



Joe Mivshek

970.420.7163
joe.mivshek@km.com



kww KELLERWILLIAMS, REALTY
NORTHERN COLORADO

Message from the Principal, continued...

LESHER BACK-TO-SCHOOL OUTDOOR MEET & GREET

Wed., August 25, 2021, 6 - 7:45 PM, LESHER STADIUM

WHAT TO DO...

- Login into StudentVUE/ParentVUE to view your child's schedule. Schedules can also be picked up at the Counseling Office Table on the patio.
- Meet and greet your child's teachers using the map provided.
- You can sign up at their table or email for an appointment if you'd like more one-on-one time with a teacher.
- The building is open for self-guided tours. Masks are required indoors. Please socially distance.
- Enjoy dinner from one of our food trucks on Ellis St.
- Parent-Teacher Conferences will be held in October.

Hope to see you Wednesday!

LESHER MAIN OFFICE 970.472.3800 ATTENDANCE LINE 970.472.3815
[HTTPS://LES.PEDSCHOOLS.ORG](https://les.pedschools.org) TWITTER: @LESHER_MS FACEBOOK: LESHER MIDDLE SCHOOL

continued...

SUMMITSTONE
HEALTH PARTNERS

I'M NOT IN
"CRISIS"

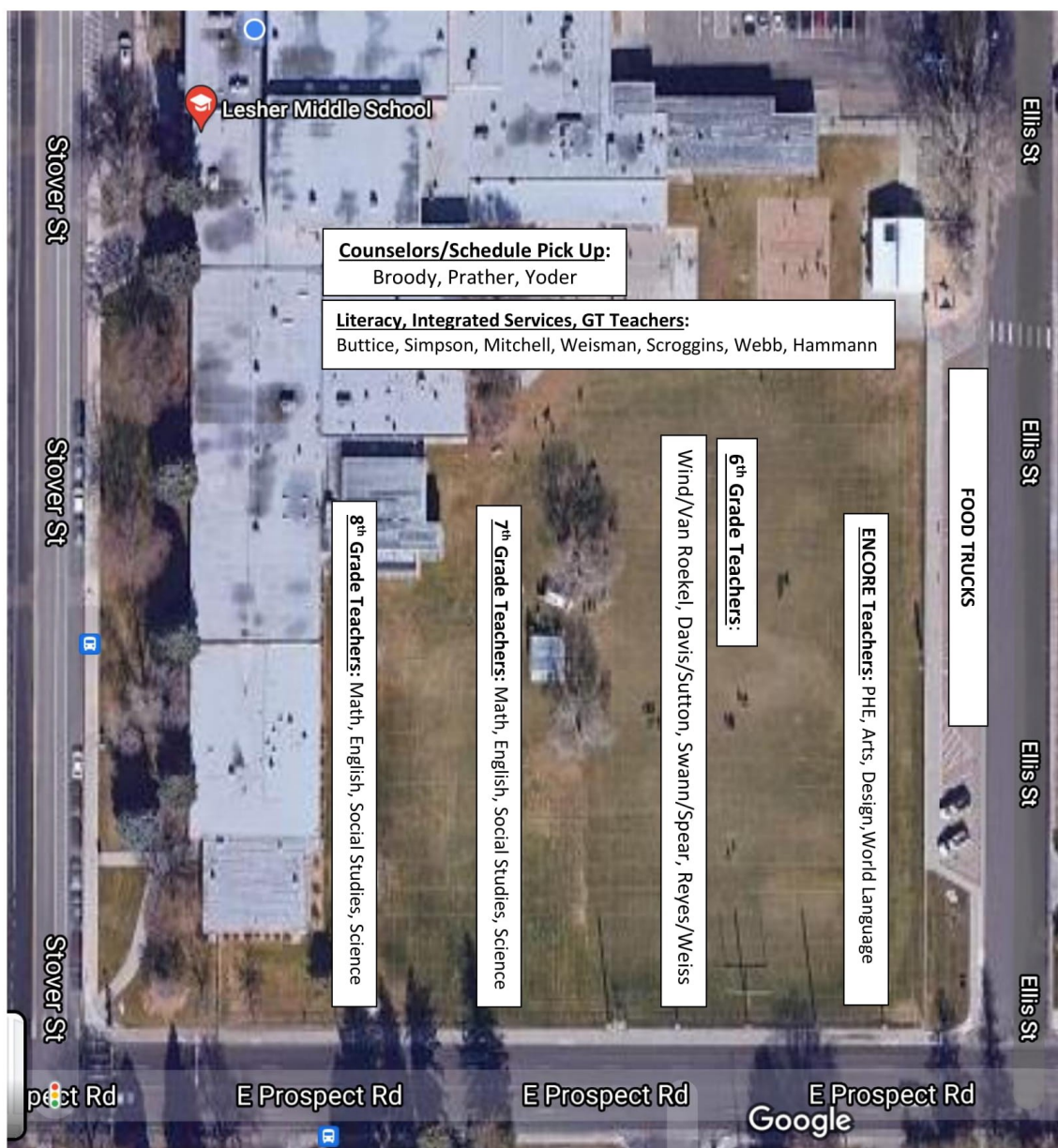
BUT TALKING
WOULD
HELP...

Free COVID-19 emotional
support line (970) 494-9941

BACK
to
SCHOOL

Your Hometown Healers
DOCTOR OWNED & OPERATED

The Women's Clinic
of Northern Colorado

*Message from the Principal, continued...***Back to School Outdoor Meet & Greet Map****TIME WELL SPENT**

Your child's Well Care Visits
help us address the following:



Diet & Nutrition



Chronic Health Issues



Parental Concerns



Growth, Development & More



Click Here to Self-Schedule Your Child's Well Care Visit Today!

COVID Protocols

Attached are the new fall 2021 COVID protocols fliers in multiple languages.

There is also additional COVID information on the PSD website. To get there, go to www.psdschools.org and click on the yellow "COVID" button in the upper left corner. There, you'll find the following web pages:

- [Health and Safety \(protocols\)](#), [Español fall protocols flier](#), [Arabic fall protocols flier](#)
- [2021-22 School Year FAQs](#)
- [COVID-19 Data and School Information](#)
- [PSD Contact Tracing Investigations](#)
- [COVID-19 Vaccines](#) (new page for info about clinics at schools, links to health department vaccine data/sign-ups)

Please let us know if you have questions and thank you for entrusting your children with us. Go Vikings!



2021 FALL

Please note that fall protocols could shift, as PSD adapts to public health conditions and guidance.



Review PSD's 2021-22 protocols for [Health & Safety](#)



Info on [vaccinations, clinics](#) happening at PSD schools



2021-22 [Frequently Asked Questions](#) web page

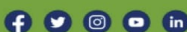


More information available PSD's [2021-22 School Year](#) and [COVID-19 data](#)

Poudre School District

2407 LaPorte Avenue,
Fort Collins, CO 80521
970-482-7420

www.psdschools.org
info@psdschools.org



PSD COVID-19 mask protocols

Masks are required for all staff, students, visitors and volunteers in PSD buildings, regardless of vaccination status.



Why masks in PSD

- We want to keep students and staff safe and keep kids in school, while **minimizing quarantines and impacts to families**. When both parties are masked, neither individual should be quarantined if there is a COVID case.
- Wearing masks allows us to prioritize **in-person learning**. In school, students have opportunities to build a sense of belonging and connect with people and their passions through activities, athletics and extracurriculars.
- We **protect one another** from the spread of COVID by wearing masks.



Two or more layers of fabric



Completely cover nose and mouth



Fit snugly against face and nose with no gaps

Mask FAQs

- Protective masks should cover the nose and mouth, with multiple layers and that fit snugly against a person's face.
- Masks are NOT required outdoors.
- Teachers and students will have opportunities to have mask breaks.
- Schools will have extra masks on hand, for those who need them.
- When you're in a room with someone else, your mask should be on.

COVID Protocols, continued...

PSD COVID-19 protocols for fall 2021

Some have changed since the spring of 2021, while others will be familiar. This is not an exhaustive list. For all protocols, please visit the [Health and Safety web page](#).

What's different?



Close contact is now defined as being less than 3 feet for a cumulative 15 minutes in 24 hours versus 6 feet, per public health guidance.

- **All activities and athletics** are happening with protocols.
- All secondary students can use **lockers**.
- **Water fountains** are turned back on.
- Students at all schools can eat in **cafeterias**.
- **School assemblies** are allowed with masks, 3 feet spacing and assigned seats.

You should be exempt from quarantine if you are one of the following:

- Fully vaccinated
- You and others are masked
- Positive for COVID 90 days prior
- Participated in weekly testing

With masks, we expect that fewer people will be quarantined. Quarantines may still occur due to exposures at lunch (no masks while eating) and high-risk activities (athletics, performing arts). There may be other instances where these may occur.

What's the same?



Keep washing your hands.

We will do this before and after recess, as well as before and after meals.

- **Students don't have to wear masks outdoors or at recess**, and students from different grades can play outside at the same time.
- **Stay home if you are experiencing symptoms** (runny nose, new/worsening cough, fever, etc.). Follow [Return to Learn guidance](#) to come back to school.
- If you are deemed to be a close contact in a COVID case, the health department will ask you to **quarantine for 10 days**.
- There is still the option for an early release on day eight of quarantine, following the **early test-out process**.
- PSD will continue using **Precautionary Rooms** (formerly Isolation Rooms) to separate symptomatic students from peers and staff.



Contact tracing

PSD will continue working with the [Larimer County Department of Health and Environment \(LCDHE\)](#) to conduct contact tracing investigations when there is a COVID case.

- PSD and LCDHE will identify whether anyone had close contact. LCDHE will ask close contacts to quarantine.
- In a routine classroom exposure (i.e. third graders sitting at desks), LCDHE

will likely not quarantine individuals if the county's vaccination rate is greater than 70% among those eligible to be vaccinated.

- PSD will still notify families when there is a classroom/

cohort exposure, even if no quarantines occur. The entire school community will not be notified.

- Case information will be available on the [COVID-19 data web page](#).



What to do if you're experiencing symptoms

Do your part. Don't come to school if you're experiencing symptoms. Even a runny nose counts. PSD follows the [Colorado Department of Public Health and Environment's Return to Learn guidelines](#). Parents should monitor their children for symptoms and keep them home if they are experiencing any of the following:

Critical symptoms

- Loss of taste or smell

Major symptoms

- Feeling feverish, having chills
- Temperature of 100.4 F or greater

Minor symptoms

- Sore throat, runny nose or congestion
- Muscle or body aches

[Review the guidelines](#) for a full list of symptoms and how to respond.



Vaccination FAQs

- Please get vaccinated, if it is the right decision for you and your family.
- PSD is **not requiring but strongly encouraging** staff and students to be vaccinated.
- PSD continues to partner with public health agencies to offer vaccination opportunities. For more information, including about upcoming clinics in PSD, visit the [Vaccinations web page](#). For more information, visit [LCDHE's website](#).

New SRO communication protocol in place for 2021-22

We are pleased to welcome Officer Cole Zempel to Leshar Middle School! Officer Zempel will maintain an office at Leshar. He is assigned to serve Leshar, PGA, Centennial and Tavelli.. He comes to us after 3 years as the SRO at Fort Collins High School.

New for the 2021-22 school year, Families can choose whether to opt their student out of a class when the SRO is scheduled to be a guest lecturer. If YOU choose to do so, students will be given topic-related work to complete during the scheduled class. If YOU do not opt out, it will be assumed that the student may attend.

[Information about PSD's School Resource Officer Program >>>](#)

- WELCOME - BACK TO SCHOOL

Smile! Picture Day is Coming Soon!

Say cheese, our camera crew is coming through Lesher on Thursday, August 26th. Pictures will be taken in the Media Center beginning at 8 am (teachers will dismiss students at appropriate time). You can safely and securely PREORDER your pics online by visiting www.skillmanphotography.com and using access code LESH2021. If you'd prefer to pay in person, send your student with your completed order form on picture day.



*"Your
School Portrait
Professionals"*

818 E. Elizabeth, Ft. Collins, Co 80524
Phone (970) 484-3403 or 1-888-550-1516
www.skillmanphotography.com

LESHER MIDDLE SCHOOL, AN IB WORLD SCHOOL
2021 PICTURE DAY: THURSDAY, AUGUST 26, 2021
TIME: 8:00 am till done STAFF: 7:30 am

Order Now From These Portrait Packages For The Best Prices

ON LINE ORDERING AVAILABLE (see below)
FOR STUDENT AND STAFF SAFETY COVID19 PRECAUTIONS WILL BE FOLLOWED

PACKAGE A - \$ 34.25

3 - 8x10 Portraits
2 - 5x7 Portraits
2 - 3 1/2 x 5 Portraits
8 - 2x3 Gift Wallets
8 - Wallet Exchange
PACK AY - \$ 49.25
Same as above + download

PACKAGE B - \$ 32.00

1 - 8x10 Portrait
4 - 5x7 Portraits
2 - 3 1/2 x 5 Portraits
8 - 2x3 Gift Wallets
8 - Wallet Exchange
PACK BY - \$ 47.00
Same as above + download

PACKAGE C - \$ 27.75

1 - 8x10 Portrait
2 - 5x7 Portraits
2 - 3 1/2 x 5 Portraits
4 - 2x3 Gift Wallets
8 - Wallet Exchange
PACK CY - \$ 42.75
Same as above + download

PACKAGE G - \$ 20.50

1 - 10x13 Portrait
PACK GY - \$ 35.50
Same as above + download

PACKAGE H - \$ 16.00

1 - 8x10 Portrait
PACK HY - \$ 31.00
Same as above + download

PACKAGE D - \$ 25.00

3 - 5x7 Portraits
2 - 3 1/2 x 5 Portraits
4 - 2x3 Gift Wallets
8 - Wallet Exchange
PACK DY - \$ 40.00
Same as above + download

PACKAGE E - \$ 22.50

1 - 5x7 Portraits
2 - 3 1/2 x 5 Portraits
4 - 2x3 Gift Wallets
8 - Wallet Exchange
PACK EY - \$ 37.50
Same as above + download

PACKAGE F - \$ 20.00

1 - 3 1/2 x 5 Portrait
6 - 2x3 Gift Wallets
8 - Wallet Exchange
PACK FY - \$ 35.00
Same as above + download

PACKAGE I - \$ 16.00

2 - 5x7 Portraits
PACK IY - \$ 31.00
Same as above + download

BONUS PACKS - MAY ONLY BE ORDERED WITH ONE OF THE ABOVE PACKAGES.
The following bonus packs may be added on in any quantity or combination to a basic package.

BONUS PACK J - \$ 9.00

1 - 10x13 Wall Portrait
BONUS PACK M - \$ 7.00
4 - 3 1/2 x 5 Portraits

BONUS PACK K - 7.00

1 - 8x10 Portrait
BONUS PACK N - \$ 7.00
8 - 2 1/4 x 3 1/4 Gift Wallets

BONUS PACK L - \$ 7.00

2 - 5x7 Portraits
BONUS PACK O - \$ 7.00
16 - Wallet Exchange

BONUS PACKAGE P - \$ 14.00

1 - Magnetic Dry Erase Message Board with picture

BONUS PACKAGE Q - \$ 14.00

1 - Fun Pack - Laminated incl. 4 bag tags, 2 book marks, 1 door hanger, 2 key fobs, 1 ruler, all with picture.

A portion of the package price may be paid to, or returned as service items to the school or sponsoring organization in support of its programs.

R - BASIC RETOUCHING - \$ 7.00

Basic retouching will minimize minor skin problems, will soften major skin problems but will not correct hair and dress or major skin problems or facial discolorations..

S - FULL RETOUCHING - \$ 13.00

Full retouching is our top of the line studio retouching that should be ordered when major corrections are needed.

U - ADD NAME & YEAR on all 2x3 wallets- \$ 5.00

Your image on CD or download with copyright release.

PACKAGE V - \$ 33.50 CD alone with no portrait package ordered.

BONUS PACKAGE W - \$ 19.00 CD with a portrait package ordered.

PACKAGE Y - \$ 30.50 Download of image with secured cloud storage.

SECURE PRE-ORDER ON LINE-Go to www.skillmanphotography.com
Click on pre order fall school portraits and have credit card ready.

Access Code : LESH2021

.....cut here.....
PAYING BY CREDIT CARD(Cut out and Insert) Name on Credit Card _____ Type _____
CC Number _____ Expiration Date _____ Security # _____ (MC, Visa)

Yearbooks!

We cannot wait to capture the memories of this school year in the 2021-2022 yearbook, including those school pictures ☺ While each year brings new classes, teachers and friends, your student's memories last forever in the yearbook. Take advantage of the lowest price of the year and buy your student's yearbook today. **Purchase personalization and add four FREE icons! OFFER ENDS August 27th.**

Leshar's yearbook has been nationally recognized for the last 5 years! Our student staff does an amazing job of telling Leshar's story. Don't miss out!

CLICK HERE to order your copy today: WWW.JOSTENSYEARBOOKS.COM

We didn't realize
we were making
memories, we just
knew we were
having fun

Leshar Athletics and Activities

Fall sports are in full swing!

Visit the athletics page on our website

(<https://les.psdschools.org/athletics-activities>)

for the most up to date information about sports here at Leshar.

And stay tuned for Clubs and Activities updated information for the 2021-22. We're so excited to bring athletics, clubs, and community back to our building in full force this year! Go Vikings!!!

Student Council

Speaking of clubs... Leshar Student Council wants YOU! If you love giving back to your school and planning events, we are the club for you! Student Council is having our annual membership drive. All grades are welcome! If you would like to be a part of Student Council, please fill out this [Google Form](#) by September 30th and join us on Tuesday, October 5th at 3pm in Ms. Jennings's room (26) for our first meeting of the year!

We can't wait to see you!



Reach Parents in Larimer County through our mobile-ready newsletters

Market your business in both Poudre and Thompson school districts.

You gain visibility and targeted, increased awareness; schools gain funds from advertising revenue.

Advertise with The School Newsletter Company
Joe Mivshek 970-420-7163 | SchoolNewsletterCompany@gmail.com



CLICK IT

Click on the
Ads in this
Newsletter

...to learn more about
these great companies!

SPIRIT WEAR SALE!

Leshar parents, keep those credit cards handy after ordering your students school picture and yearbook, because we've got Leshar Gear for sale! Show your school spirit by purchasing the hottest Leshar looks of the season. Deadline to order is Sunday, August 29th!



LESHER 2021

Spirit

ONLINE WEBSTORE
ORDER BY AUGUST 29TH!



[HTTPS://SPORT-ABOUT.PRINTAVO.COM/MERCH/LESHER-SPIRIT](https://sport-about.printavo.com/merch/lesher-spirit)

W.E.B — Where Everybody Belongs

W.E.B. (Where Everybody Belongs) is a program that connects 8th grade students with our incoming 6th graders to support them through the transition to middle school. Our W.E.B. Leaders are dedicated students who go through training to learn about leadership, management, and relationship building. On 6th Grade Transition Day, our W.E.B. Leaders lead small groups where they ran activities with our 6th grade students to build connections and welcome them to Lesher!

W.E.B. Coordinators: Ashley Broody & Becca Spear



2021 SHAPE Colorado Teacher of the Year

Congratulations to Lesher's very own Matt Moeller- recently recognized as the 2021 SHAPE (Colorado Society of Health and Physical Education) Teacher of the Year!!

This award recognizes individuals who have demonstrated continuous dedication to the advocacy and enhancement of student learning in physical education in the state of Colorado. Mr. Moeller personifies the concept that the effort made to enrich the goals and objectives of physical education is a labor of love, inspired by commitment and dedication.

Attendance

We want every student to be successful at Lesher Middle School, and the path to success starts with regular school attendance. It is difficult, if not impossible, to replace or replicate the learning that happens on any given school day. Makeup work is helpful, but not a substitute for classroom instruction and interaction. Regular and on time attendance are good habits that should be expected, and appreciated, at all school levels.

Absences (and late arrivals) are either **Excused** or **Unexcused**.

Excused: An absence due to illness, an appointment, a serious illness or death of a family member, observance of religious holidays, and absences pre-arranged with the school. Students may request make-up work upon their return to school. Students are allowed one day to make up work for each day of absence.

Because of the academic importance of attendance, we kindly request that you plan doctor and dentist appointments before or after school hours when possible.

Unexcused: An absence in which your student is out of school that does not qualify as excused or explained as detailed above.

What can parents and guardians do to support strong school attendance?

- Help your child get to school on time, ready to learn every day.
- Notify the 24-hour attendance line **(970-472-3815)** by 10 am on the morning of an unexpected/unplanned absence. When calling the attendance line please leave the following information:
- Student Name and spelling of the last name
- Student ID number
- Date or dates of absence and reason for absence
- If student is experiencing symptoms of illness please leave details regarding symptoms, including symptom onset.
- Parent name and contact information
- Notify the 24-hour attendance line of any planned or prearranged absences as soon as possible.
- If you believe an attendance mark from a class may have been made in error, please contact the teacher to verify or correct the absence. Please allow up to 48 hours for the change to take effect.
- Absence corrections can only be backdated 2 weeks, so please keep a regular eye on your student(s) attendance and notify the attendance line of absences in a timely manner.



Morning Fresh Cash for Caps

If you are a Morning Fresh Dairy customer, please bring in your rinsed milk, juice, cream, or other caps to Mr. Mayer. Leshar Middle School earns money for every cap that is returned. If you are interested in Morning Fresh Dairy, every new household sign up raises \$25 for Leshar. Click [here](#) or ask Mr. Mayer (bmayer@psdschools.org) for more information.



**SCHOOL PARTNERS!
LET'S RALLY
TOGETHER!**

Mention your school at check-out.



THROUGH AUGUST!



Purchases supporting your school through August earns a chance to win a



Purchases anytime of the year count! BUT, let's RALLY to kick off and \$upport your new school year!

Purchase ONLINE at AFW.com, at any store, or by phone at 800-992-7997.

INVITE OTHERS to participate. Friends and family can help too!
2% donation on any purchase; 4% on Beautyrest or Serta mattresses!

THANK YOU FOR YOUR SUPPORT!



**SOCIOS ESCOLARES!
VAMOS
A JUNTARNOS!**

Menciona tu escuela en la registradora!



HASTA AGOSTO!



Compras que respaldan su escuela a través Agosto gana una oportunidad de ganar una tarjeta de regalo



Compras en cualquier momento del año cuentan! PERO, vamos a reunirnos para comenzar y apoyar su nuevo año escolar!

Compra en cualquier ubicación de AFW en línea en, AFW.com o teléfono al 800-992-7997.

INVITA A OTROS a participar. Amigos y familiares también pueden ayudar!
2% de donación en cualquier compra; 4% en colchones de Beautyrest o Serta!

GRACIAS POR SU APOYO!



Colorado Trailblazer



"School to Watch"

2020  2023

Leshar Middle School

Traffic Safety at Lesher Middle School

1400 Stover St. | Fort Collins



In the interest of student, parent, & staff safety:

Drivers

- Slow down
- Drop-off/pick-up students at designated times & places
- **PULL FORWARD** in the drop-off/pick-up area
- Yield to pedestrians & crossing guards in crosswalks
- **DO NOT BLOCK** the roadway, bicycle lanes, handicap spaces, bus entrances, or driveways
- NO parking, stopping, or standing at **RED CURBS**
- DO NOT make u-turns on streets around the school

Bicyclists/Skateboarders

- Bicycles should use bicycle lanes & obey traffic laws
- Dismount your bicycle/skateboard on the sidewalk in front of the school & walk
- Secure your bicycle/skateboard on the racks at the north side of the school

Pedestrians

- Use crosswalks
- Make eye contact with drivers prior to crossing





**Health
Care·A·Van**

AUG 26 • SEPT 30 • OCT 28

10:00am - 2:00pm

FIRST PRESBYTERIAN CHURCH

531 S COLLEGE AVE, FORT COLLINS

FREE FOOD AND GIVEAWAYS!!!

**OPPORTUNITY TO GET ANSWERS & RESULTS
FROM HEALTH CARE PROFESSIONALS**

MEDICARE/MEDICAID COUNSELING

VITALS AND GLUCOSE TESTING

DENTAL SCREENINGS

VISION SCREENINGS

BALANCE TESTING

ADVANCE DIRECTIVES

LUNG FUNCTION TESTING

MEDICATION REVIEWS

FLU SHOTS (SEPT & OCT)

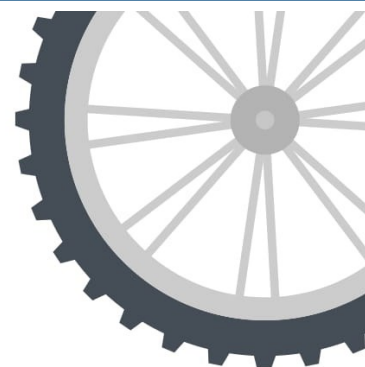
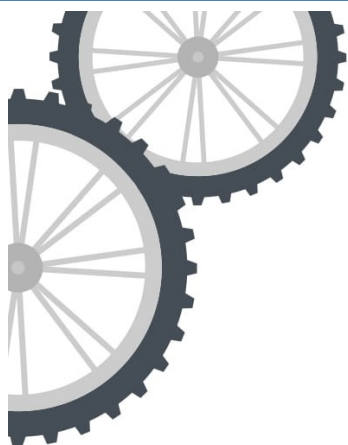
NALOXONE EDUCATION



TRANSPORTATION PROVIDED!

**HOP ON/OFF THE BUS AT MURPHY CENTER, RESCUE
MISSION, OR CATHOLIC CHARITIES**

For questions please call the Murphy Center at (970) 494-9940



PVMHP Community Park Bike Repair Clinic/ Reparación de Bicicletas

What: Free Bike Repair and Maintenance Clinics
Que: Reparaciones y mantenimiento de bicicletas

Who: Free repairs available to any PVMHP resident/families
Quién: Reparación gratuita para PVMHP y familias

When: Third Wednesday of each month, May-October 2021
May 19th, June 16th, July 21st, Aug 18th, Sep 15th and Oct 20th
Quando: El tercer miércoles de cada mes Mayo- Octubre

Time: 3:30 pm to 6:30 pm
Horas: 3:30 pm to 6:30 pm

**For more information, please email Mark@HomewardAlliance.org or
Nancy at serviciosfamiliares@homewardalliance.org**



Bike Clinics sponsored by Bike Fort Collins.



FAMILY RESOURCE FAIR

Saturday • August 28, 2021
9:00 - 11:30 am



Northside Atzlan Community Center
112 E Willow St, Fort Collins

CHILDREN & TEEN CLOTHING
HYGIENE PRODUCTS
LOCAL AGENCIES & RESOURCES
FREE HAIRCUTS

for more information please visit: bit.ly/HWA-FRF

*for families experiencing homelessness, doubled/tripled up
or facing financial concerns*



FERIA DE RECURSOS FAMILIARES

sábado • 28 de agosto de 2021
9:00 - 11:30 am



Northside Atzlan Community Center
112 E Willow St, Fort Collins

ROPA PARA NIÑOS Y ADOLESCENTES
PRODUCTOS DE HIGIENE
AGENCIAS LOCALES Y RECURSOS
CORTES DE PELO GRATIS

para obtener más información, visite: bit.ly/HWA-FRF

*Para familias sin hogar, duplicadas/ triplicadas en un hogar
o que enfrentan problemas financieros.*

**THERE ARE GOOD SHIPS
AND WOOD SHIPS,
SHIPS THAT SAIL THE SEA,
BUT THE BEST SHIPS
ARE FRIENDSHIPS,
MAY THEY ALWAYS BE!**

IRISH PROVERB



*We may have
all come on
different ships,
but we're in the
same boat now.*

Martin Luther King, Jr.

WE ARE... LESHER!

THANK YOU... YOU'RE WELCOME!